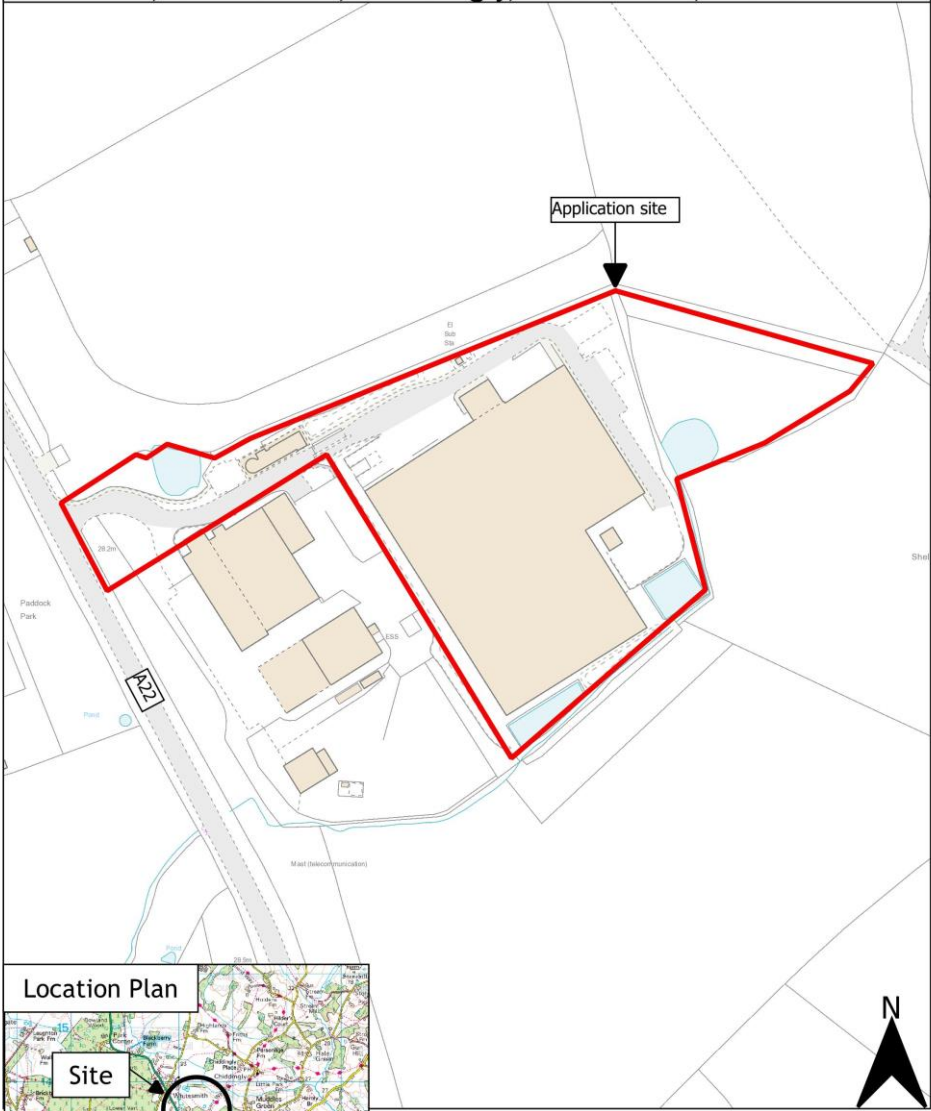


East Sussex County Council Planning Committee 12 November 2025

WD/901/CM– The Woodland Centre, Veolia ES (South Downs) Ltd, Whitesmith, Chiddingly, East Sussex, BN8 6JB

Variation of Condition 2 (to permit a second weighbridge), Condition 10 (to extend working hours on Saturdays, Sundays and Bank Holidays), Condition 15 to permit increased vehicle movements) and condition 17 (to permit outside storage of equipment) of Planning Permission WD/771/CM.

WD/901/CM - The Woodland Centre, Veolia ES (South Downs)
Ltd, Whitesmith, Chiddingfold, East Sussex, BN8 6JB

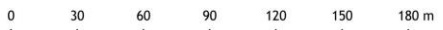
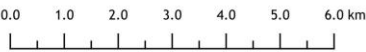
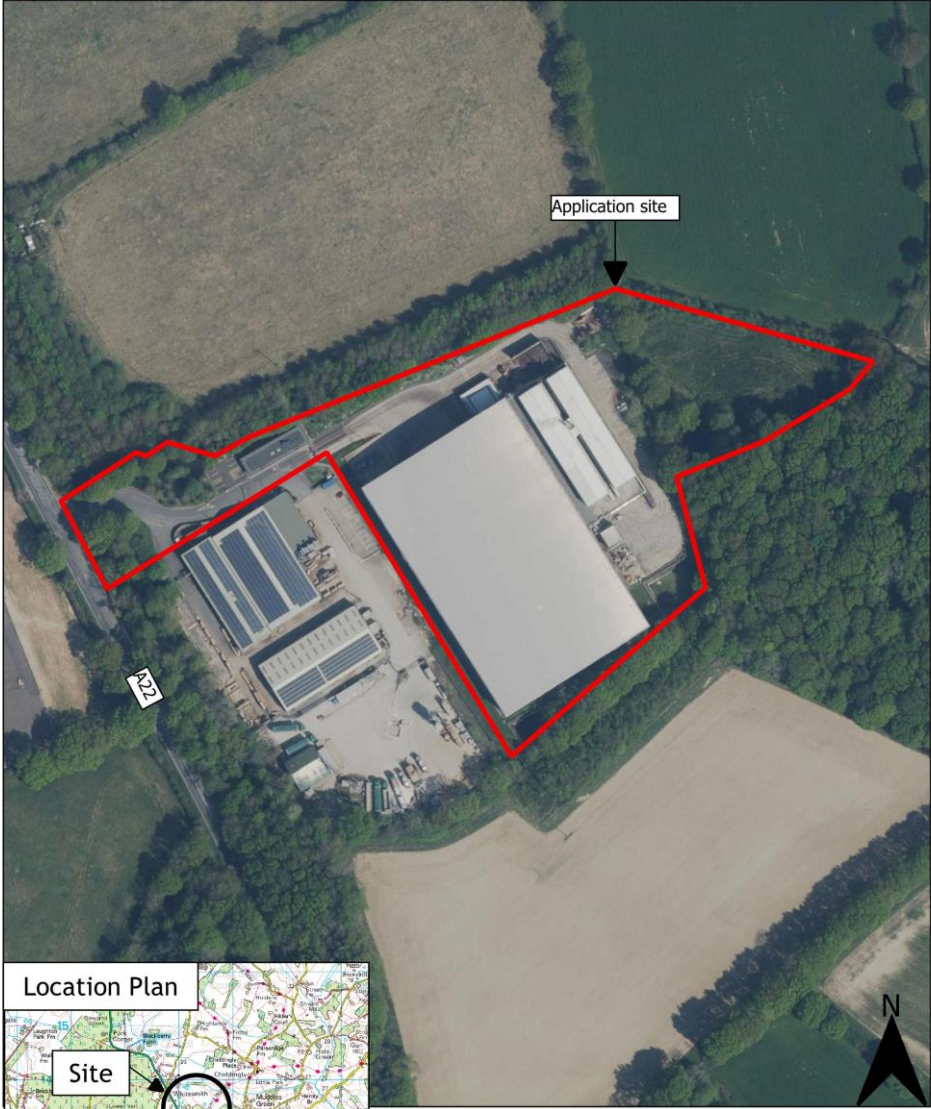


0 30 60 90 120 150 180 m

Rupert Clubb BEng (Hons) CEng MICE,
Director of Communities, Economy and
Transport, East Sussex County Council

Reproduced from the Ordnance Survey mapping with the permission
of the Controller of Her Majesty's Stationery Office © Crown
Copyright. Unauthorised reproduction infringes Crown copyright and
may lead to prosecution or civil proceedings. East Sussex County
Council, 100019601, 2017

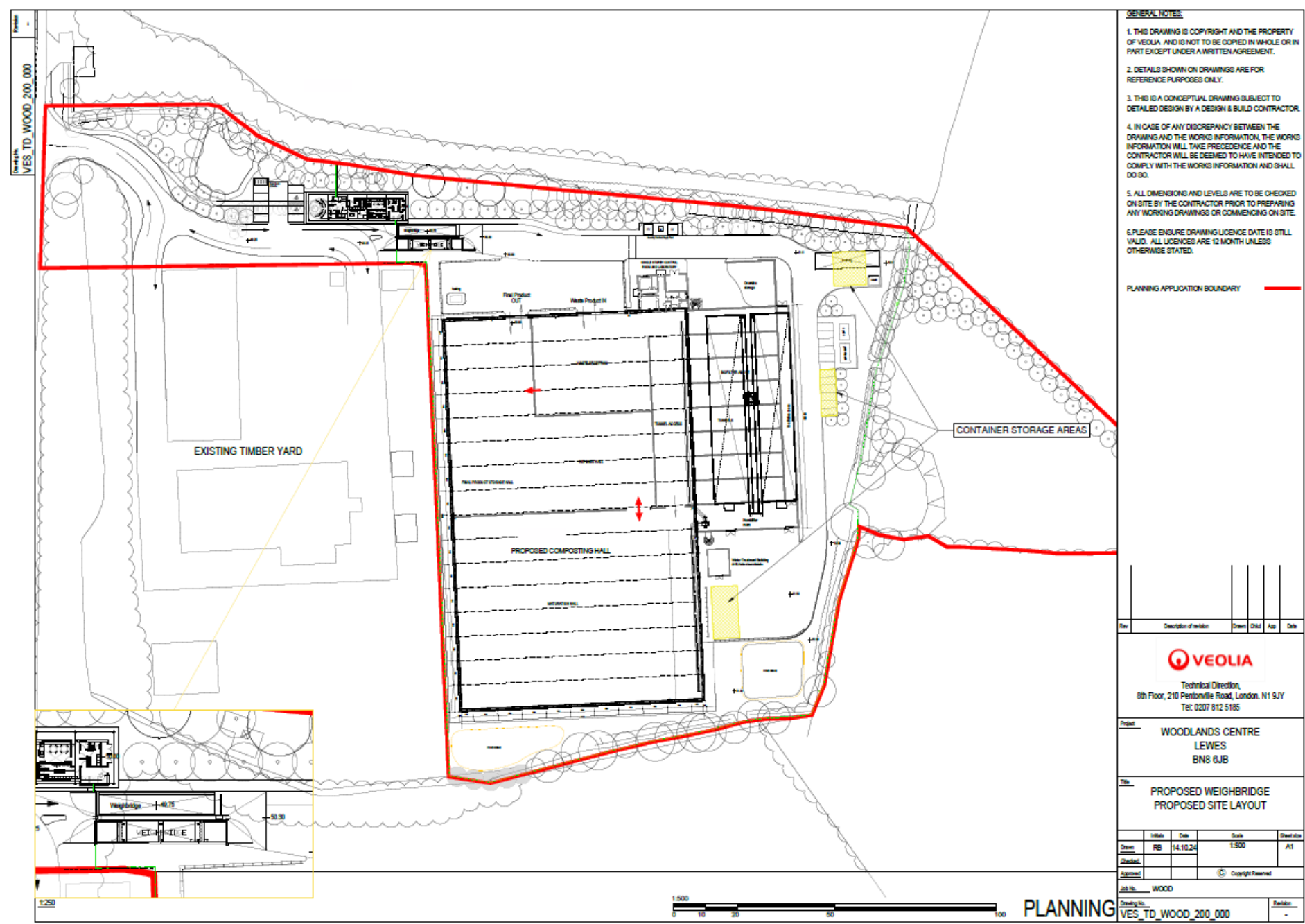
WD/901/CM - The Woodland Centre, Veolia ES (South Downs)
Ltd, Whitesmith, Chiddingfold, East Sussex, BN8 6JB

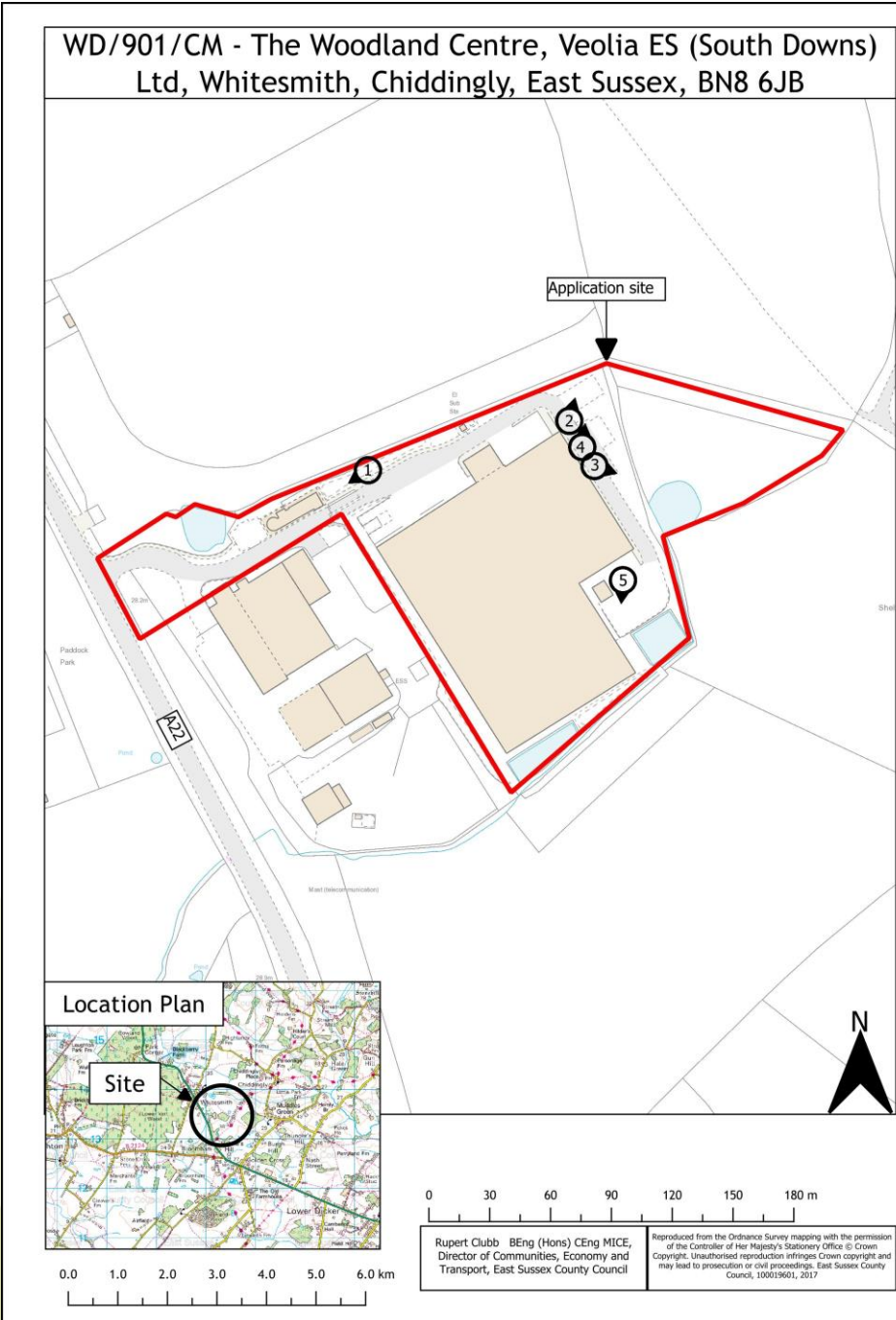


Rupert Clubb BEng (Hons) CEng MICE,
Director of Communities, Economy and
Transport, East Sussex County Council

Reproduced from the Ordnance Survey mapping with the permission
of the Controller of Her Majesty's Stationery Office © Crown
Copyright. Unauthorised reproduction infringes Crown copyright and
may lead to prosecution or civil proceedings. East Sussex County
Council, 100019601, 2017

Site Layout Plan















WD/901/CM– The Woodland Centre, Veolia ES (South Downs) Ltd, Whitesmith, Chiddingly, East Sussex, BN8 6JB

Variation of Condition 2 (to permit a second weighbridge), Condition 10 (to extend working hours on Saturdays, Sundays and Bank Holidays), Condition 15 to permit increased vehicle movements) and condition 17 (to permit outside storage of equipment) of Planning Permission WD/771/CM.

East Sussex County Council Planning Committee 12 November 2025